

All version of Dairyplan now need an extra PC update to run Dairyplan
These update file MUST be installed on any Networked PC which has access
Dairyplan including DPView Touch PC's

Installing DairyPlan for the 1st time using DairyPlan 5.232 or upgrading to it you
need to run an extra program before proceeding with the normal installation.

Insert the DairyPlan 5.232 CD and follow the steps from page 2

From DairyPlan version 5.240 these steps will be done automatically during
Update or installation

Note This file MUST be installed on Networked PC's
Even for Version 5.240 or later Networked PC's need the 2008 Version of this
VRedist files installed

installing both versions is OK install 2005 version then 2008 version
Unfortunately both Versions have same name VRedist_x86.exe

It does not matter if you install the same file twice

If you need To Identify file version

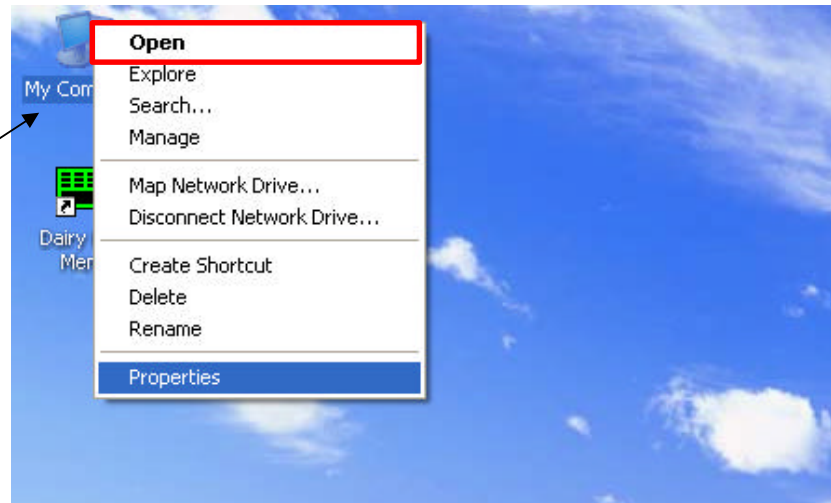
Right Click on VRedist_x86 file then
Left click properties to see file size

2005 version has file size 2.59Mb
2008 version has file size 4.02Mb

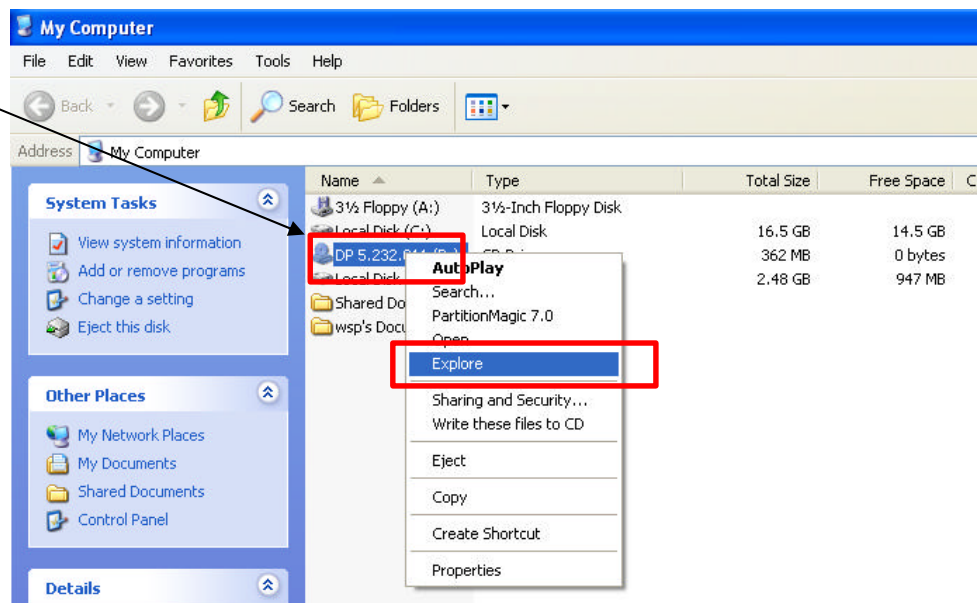
Page 5 shows screens for 2005 Version
Page 6 shows screens for 2008 Version

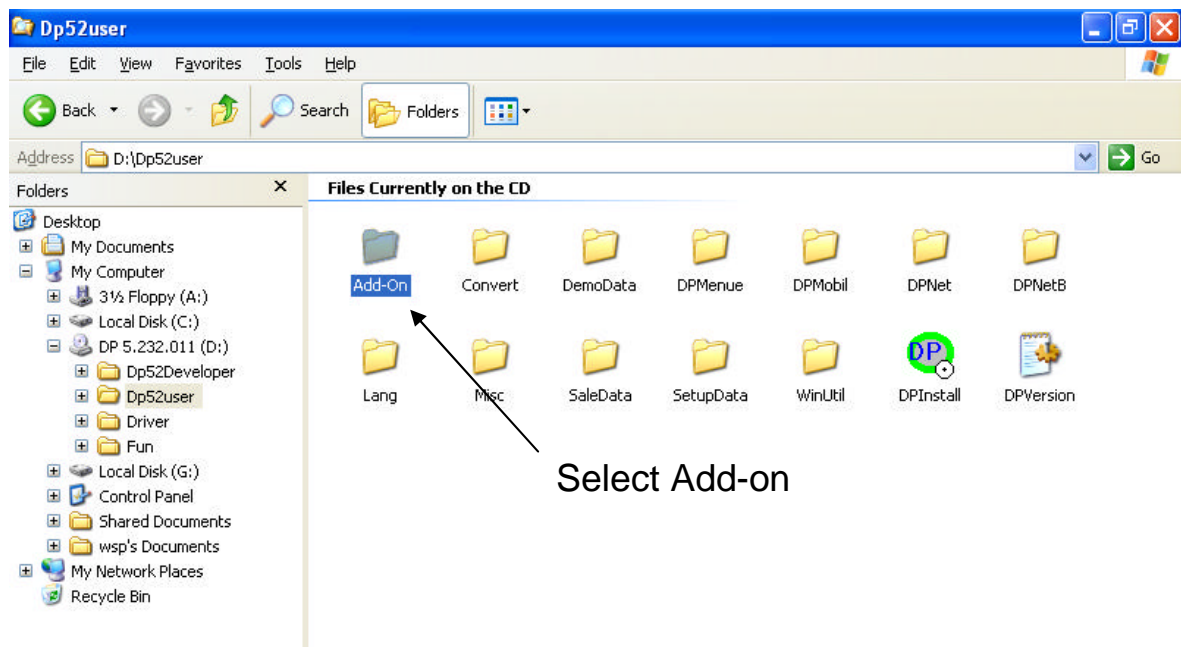
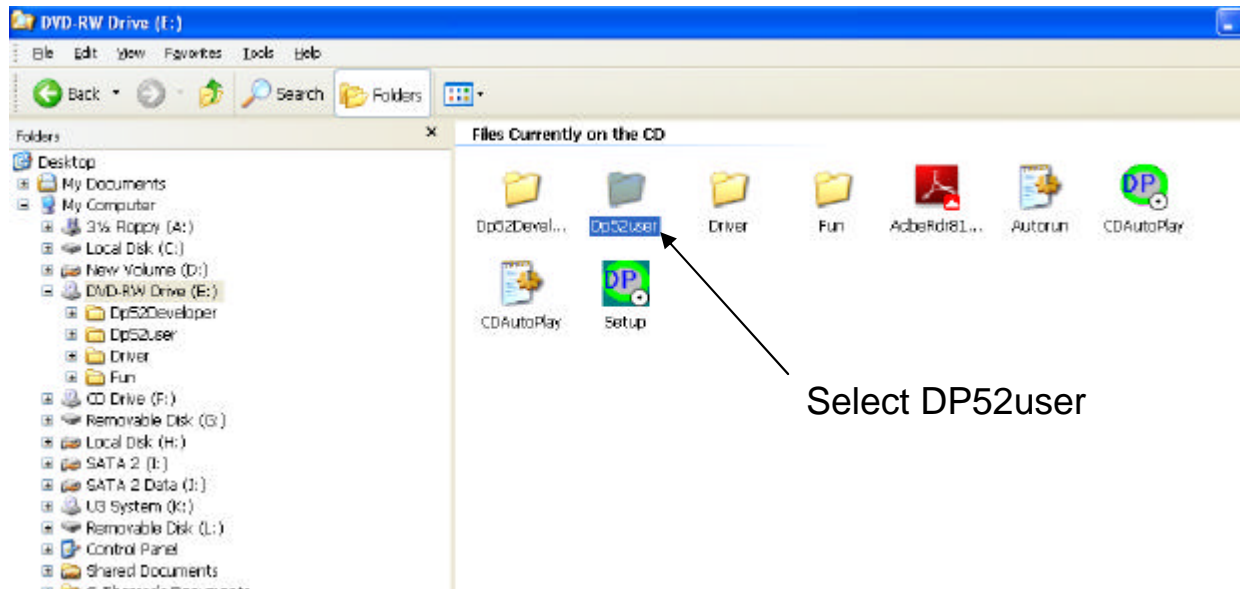
The screen shots below show how to find file on Dairyplan CD
(files are also on WestfaliaSurge Technical Info DVD in Dairyplan section)

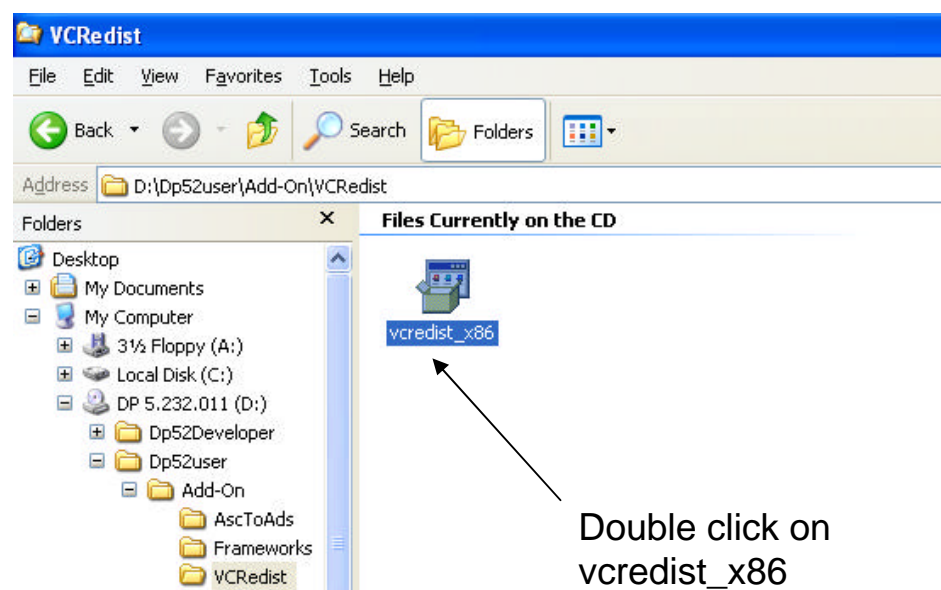
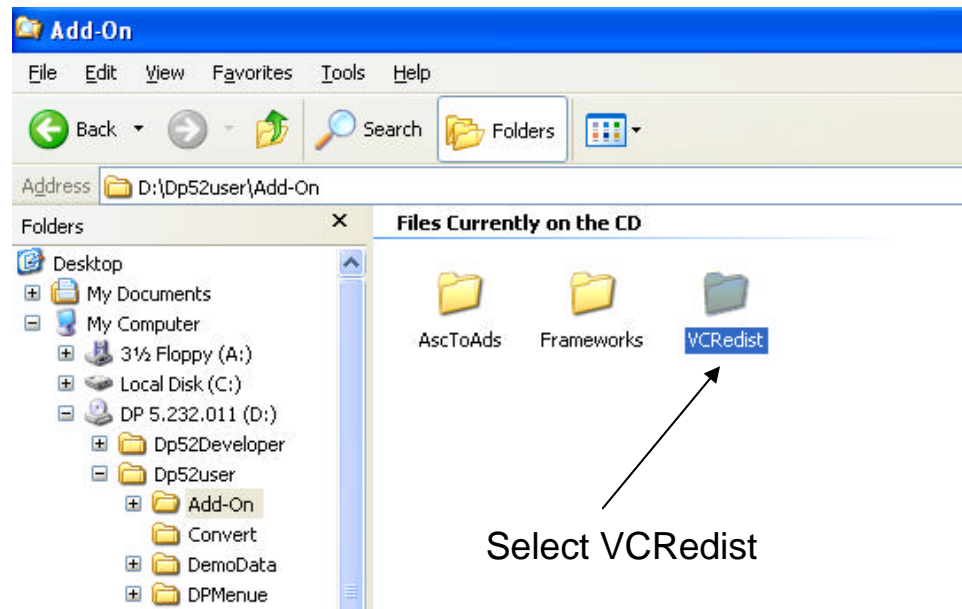
Right click on My Computer and select OPEN



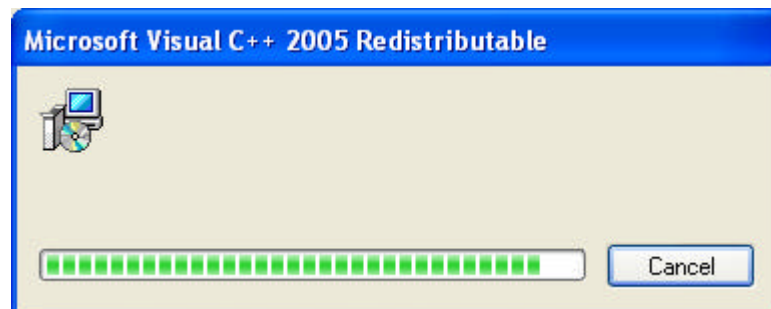
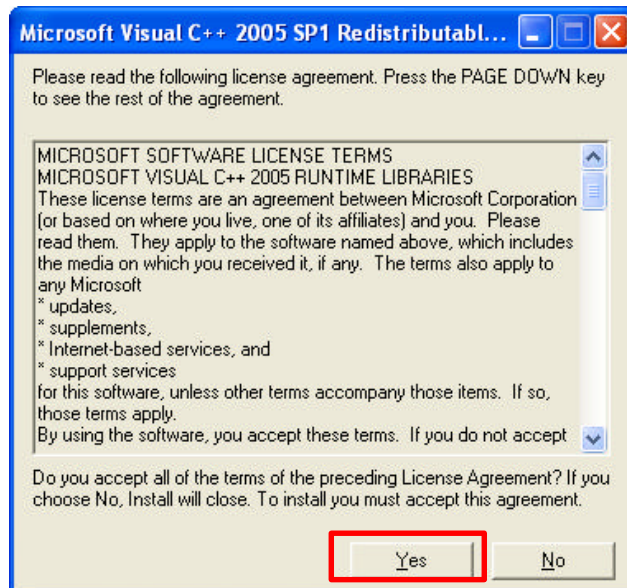
Now Right click on CD or DVD drive in which the DairyPlan CD is located and select Explore





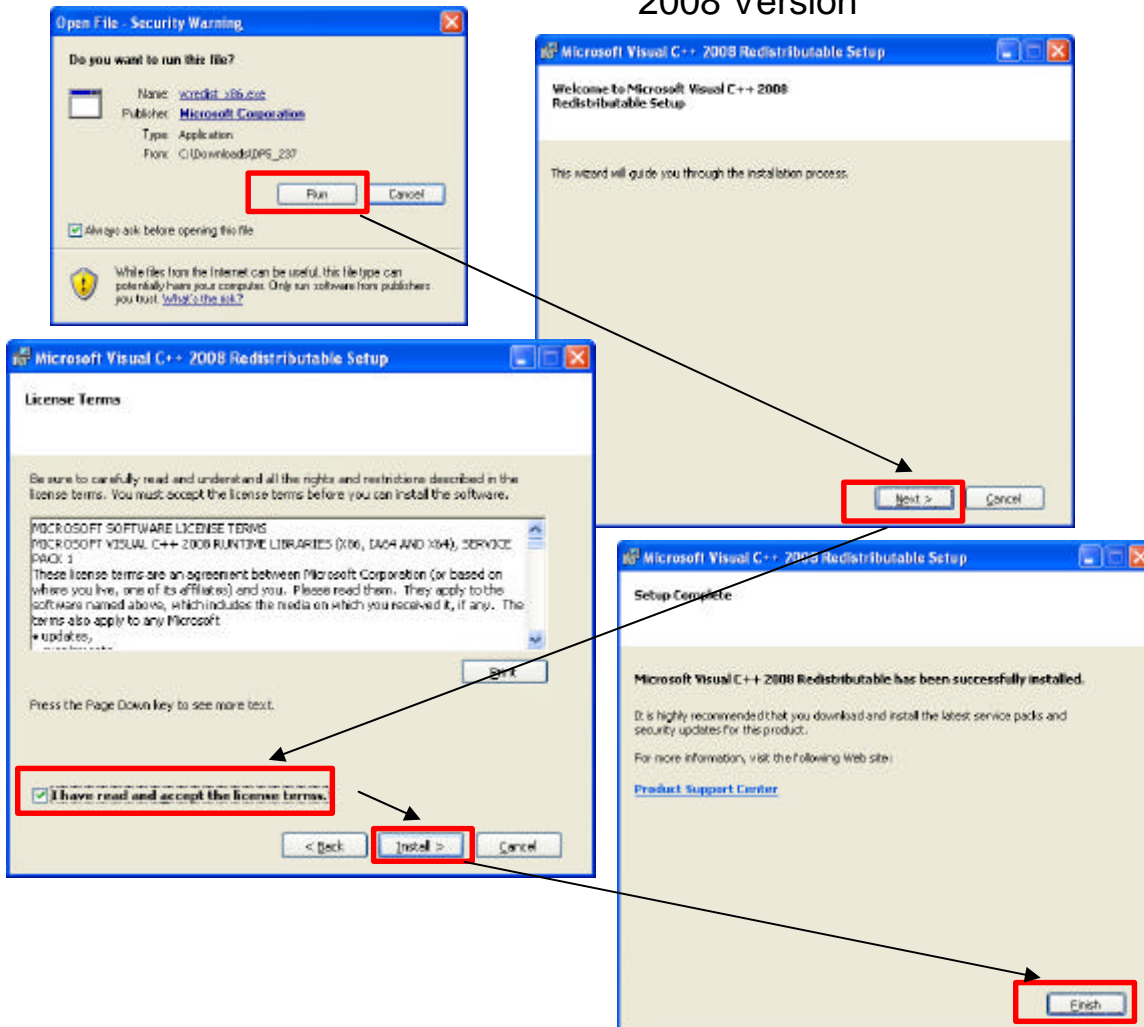


2005 Version



Once its finished installing you can now start installing DP5.232

2008 Version



Note
If 2008 version is already installed
Then this 'Maintenance Mode'
screen will appear at start of
installation Just click cancel

