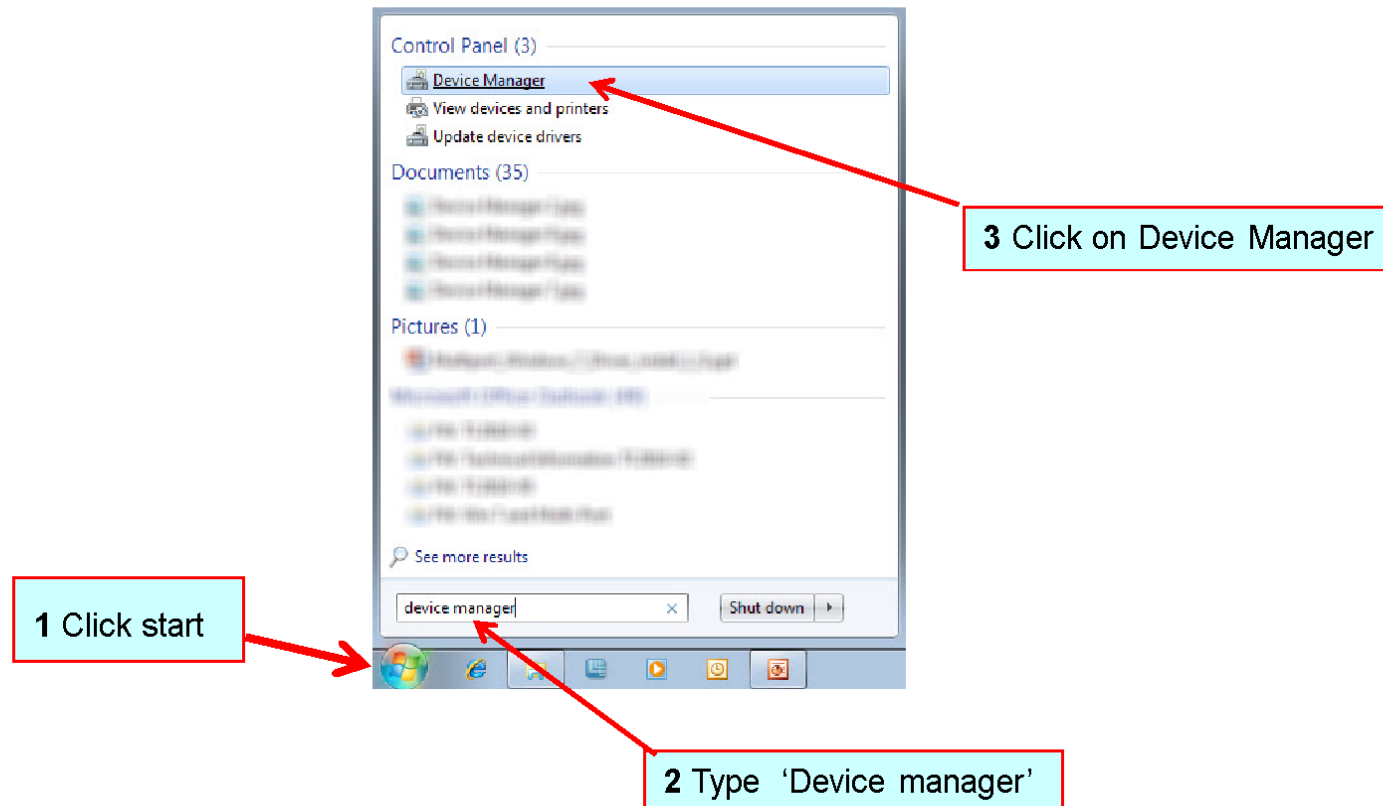
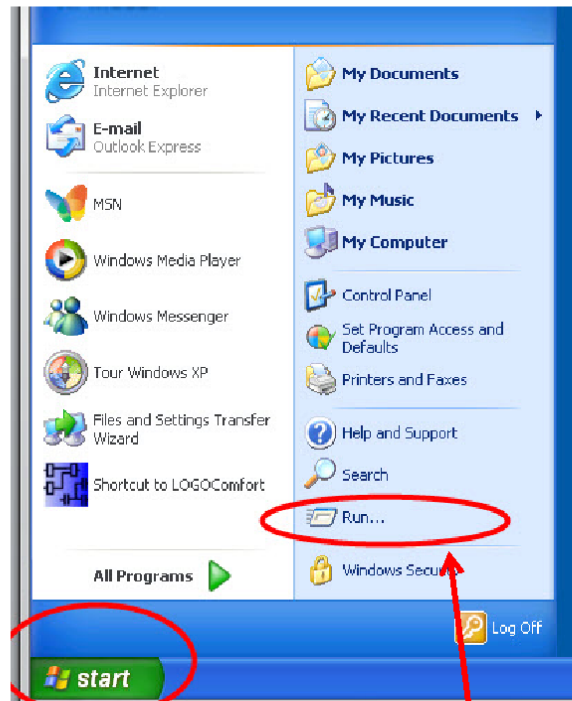


Starting Windows 7 / Vista Device Manager

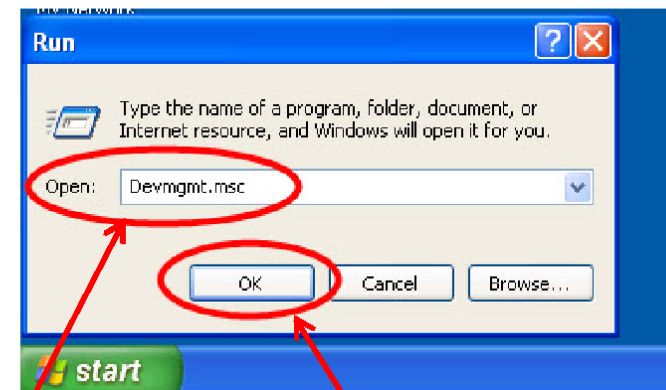


Starting Windows XP Device Manager



1 Click start

2 Click on Run

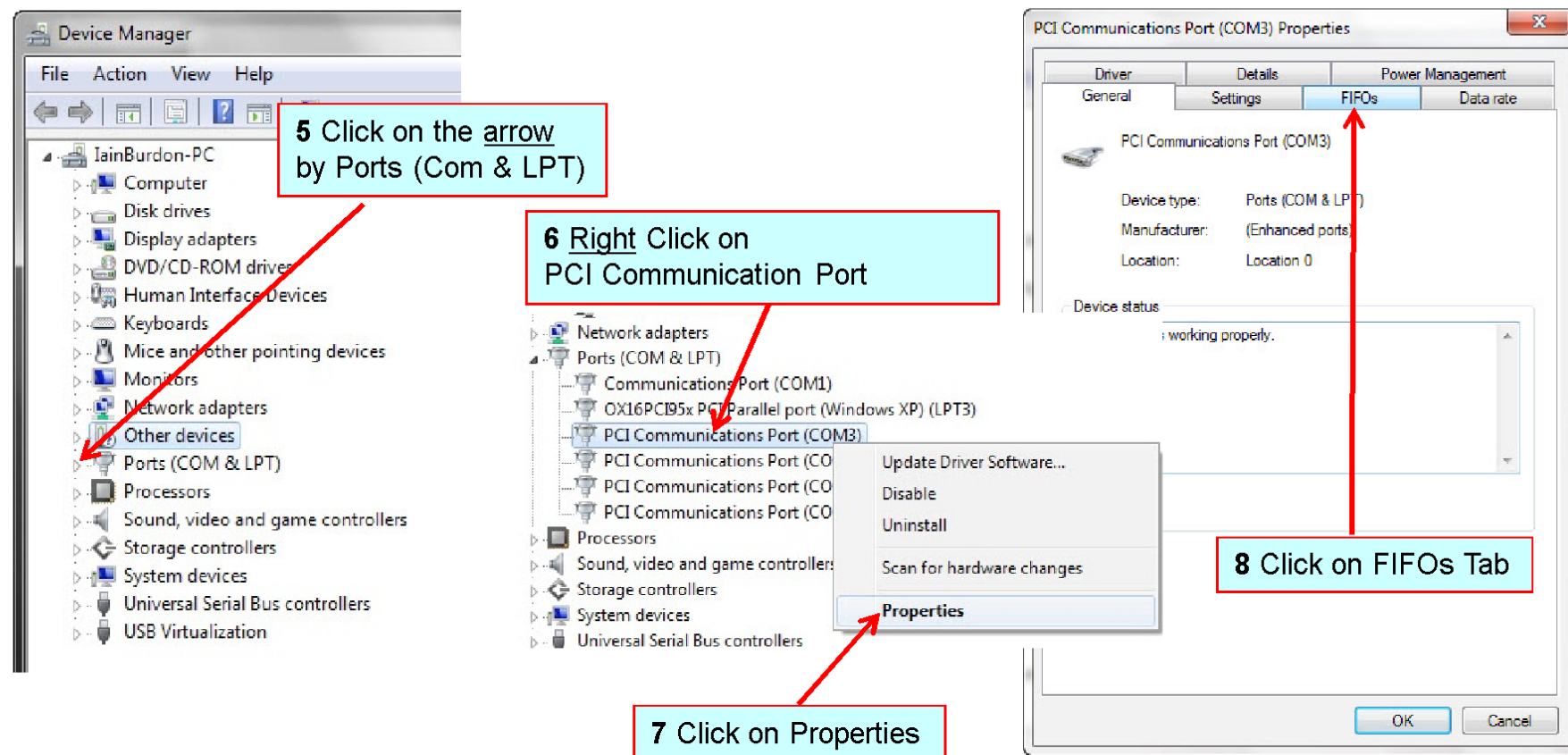


3 Type in the Box
Devmgmt.msc

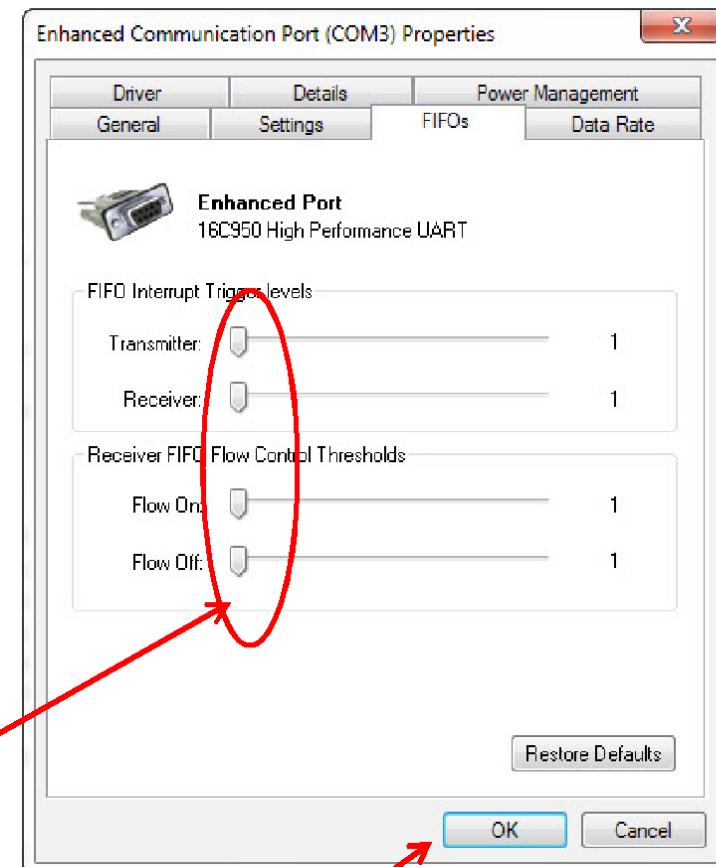
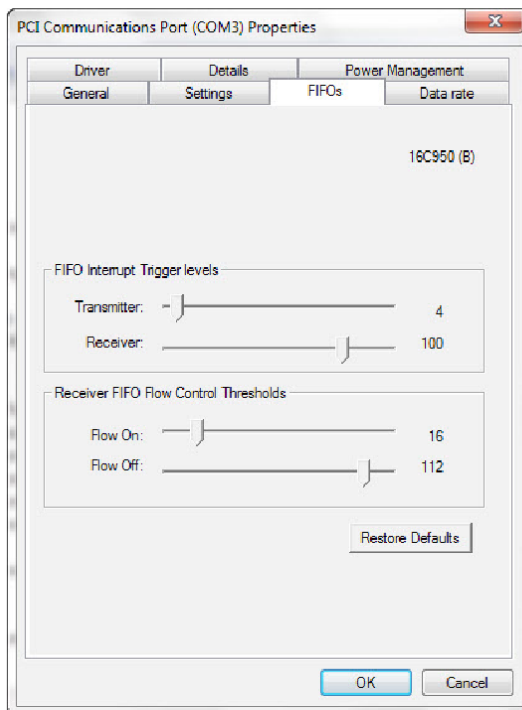
4 Then Click OK
Device Manager should start

Setting the Multiport Port FIFO buffers

If the device manager is not already open follow steps for windows Version You are using



Setting the Multiport Port FIFO buffers



9 Move ALL Sliders to Left Hand side

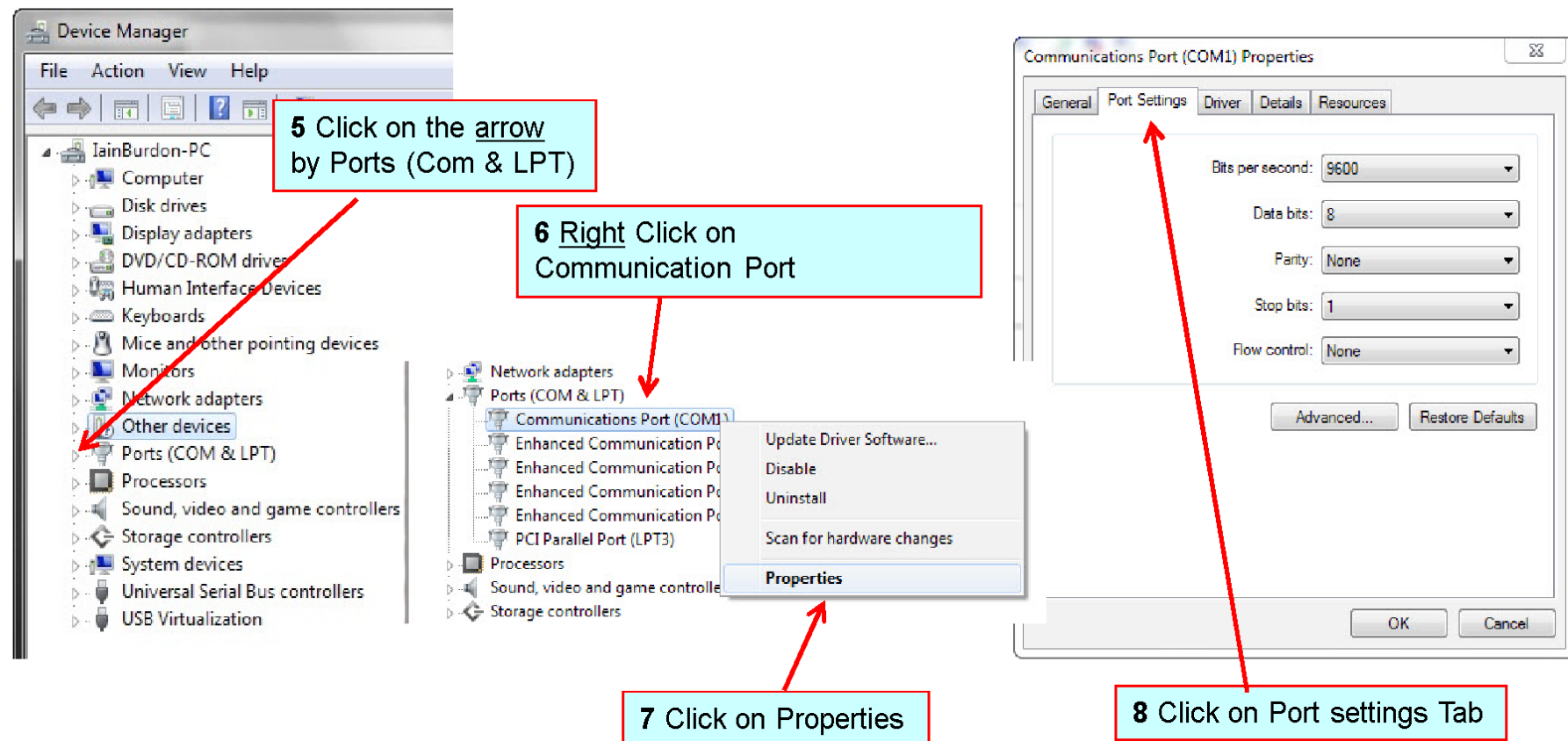
10 Click on OK

11 Repeat for All PCI Communication Ports (all 4) from step [5 / 6]

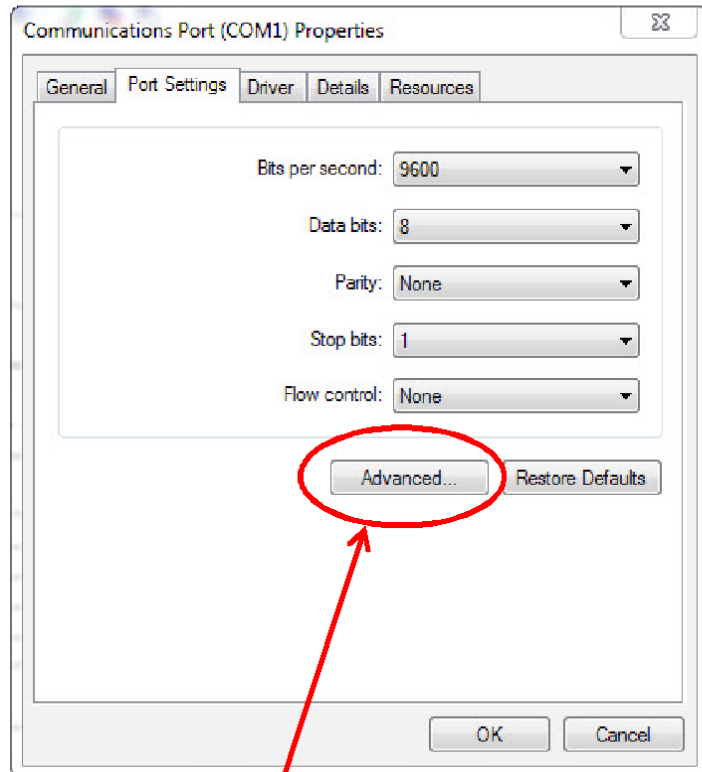
UNO Port Setting the Standard PC Com Port FIFO buffers

If you are using an UNO port Box connected directly to the PC Built in com port (or Other serial com port card)

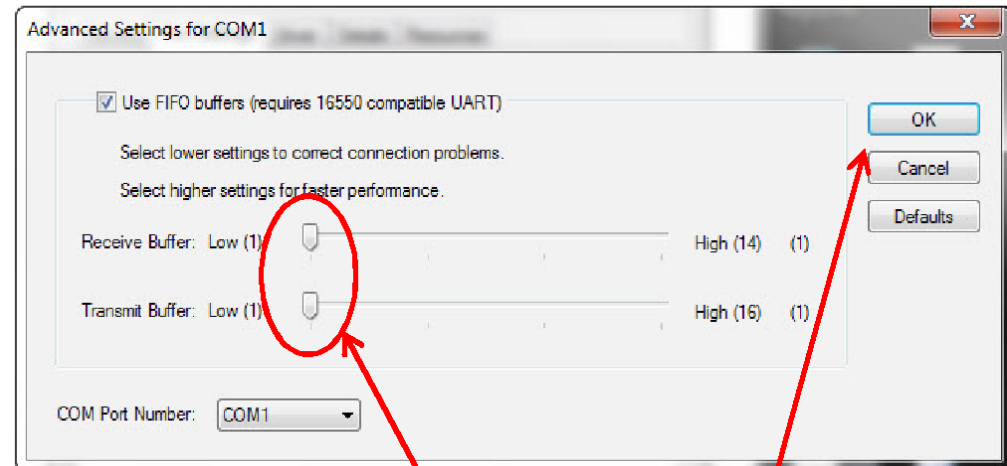
If the device manager is not already open follow steps for windows Version You are using



UNO Port Setting the Standard PC Com Port FIFO buffers



9 Click on Advanced



10 Move ALL Sliders to Left Hand side

11 Click on OK